

# T Series Transmitters

## FM Analog Tube & FM+HD



### The Tube Advantage

- Decades of Proven Field Reliability
- Environmentally Tolerant
- Optimal Lightning Protection
- Excellent Efficiency
- Much Lower Cost Than Solid State
- The Best Transmitter Value

The T Series line of transmitters from BE represent the best of high power in Analog FM or FM+HD Radio. Setting a standard for overall cost-efficiency, serviceability, reliability and long life, the T Series helps you monetize your transmitter investment at the beginning of your transmitter purchase. The T Series remains the best value per watt in high power FM transmitters.

The legendary folded half-wave cavity provides outstanding performance and superior reliability. T Series transmitters eliminate plate blocking capacitors, output coupling capacitors, and sliding contacts avoiding the most common cause of transmitter failures.

**For complete specifications visit our website:** [www.bdcast.com](http://www.bdcast.com)



With the addition of VPe, Vector Power Enhancement, BE provides a unique solution for digital adaptive pre-correction, achievement of elevated HD power levels, and second to none transmitter efficiency.

Model	Description
FM 10T	10kW Tube FM Transmitter
FM 20T	20kW Tube FM Transmitter
FM 25T	25kW Tube FM Transmitter
FM 30T	30kW Tube FM Transmitter
FM 35T	35kW Tube FM Transmitter
FM 40T	40kW Tube FM Transmitter - <b>NEW!</b>

### FMi Series FM+HD Radio Transmitters

FMi 17T 19kW FM+HD Transmitter  
FMi 21T 23kW FM+HD Transmitter  
FMi 25T 27kW FM+HD Transmitter

# STXe

## Digital Exciter / Transmitter

### BE's Next Great Exciter & Transmitter



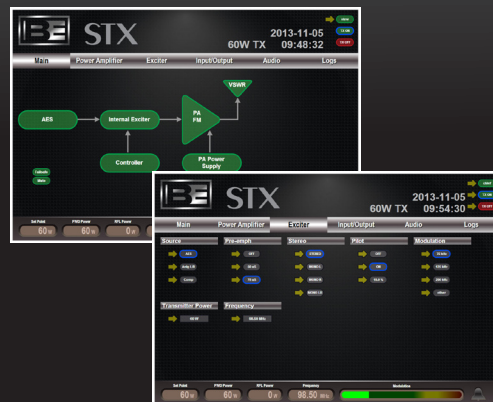
- Analog and digital FM
- Unparalleled audio performance
- Small footprint
- Standard in BE's S and T Series FM transmitters
- Range in power from 5W to 550W

#### Continuing the Tradition

BE exciters have legendary quality and performance, beginning with the FX 30 and continuing today with the the STXe digital exciters. For more than a decade, over 500 exciters per year have been purchased by either new or existing radio stations that desire the best sounding FM transmission. BE exciter's audio quality is simply the best.

Continuing the tradition is the new line of STXe Digital Exciters. The STXe line of exciters provide audio performance equivalent to the FXi Series, but in a smaller package and with a smaller price.

Standard with the STXe Exciter line is an updated GUI. If your site has IP connectivity, you can access all important parameters on your laptop, tablet, or smart phone any place, any time.



#### STXe Exciter/Transmitter

- STXe 60      5W to 66W.
- STXe 500    70W to 550W.



With the addition of VPe, Vector Power Enhancement, the STXe can also operate in HD Radio or DRM+ applications, providing the ability to be used in elevated HD level applications or in DRM+ installations that desire a FM analog and DRM+ transmission from a single transmitter. With the STXe Exciters line, you choose your digital standard and the STXe is ready for you.